



SARASWATI

COLLEGE OF PHARMACY

Mohali, Punjab

Waste Management Implementation Report

Saraswati College of Pharmacy



1. Introduction

Saraswati College of Pharmacy is committed to environmental sustainability and responsible waste handling practices. The institution generates various categories of waste including general waste, laboratory chemical waste, biomedical waste, e-waste, and liquid waste due to its academic, research, and administrative activities.

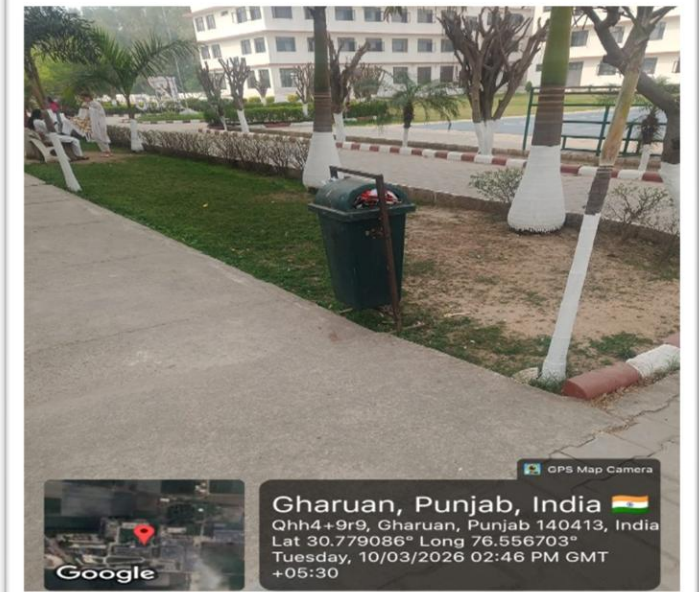
To address these environmental responsibilities, the college has implemented a structured waste management system aligned with national environmental regulations including Solid Waste Management Rules 2016, Biomedical Waste Management Rules 2016, Hazardous Waste Rules, and E-Waste Management Rules.

The institutional waste management system focuses on waste segregation, recycling, composting, safe disposal, and environmental awareness to minimize environmental impact.

2. Waste Segregation System

Segregation Categories

- Green bins – biodegradable waste (food waste, garden waste)
- Blue bins – recyclable waste (paper, plastic, packaging)



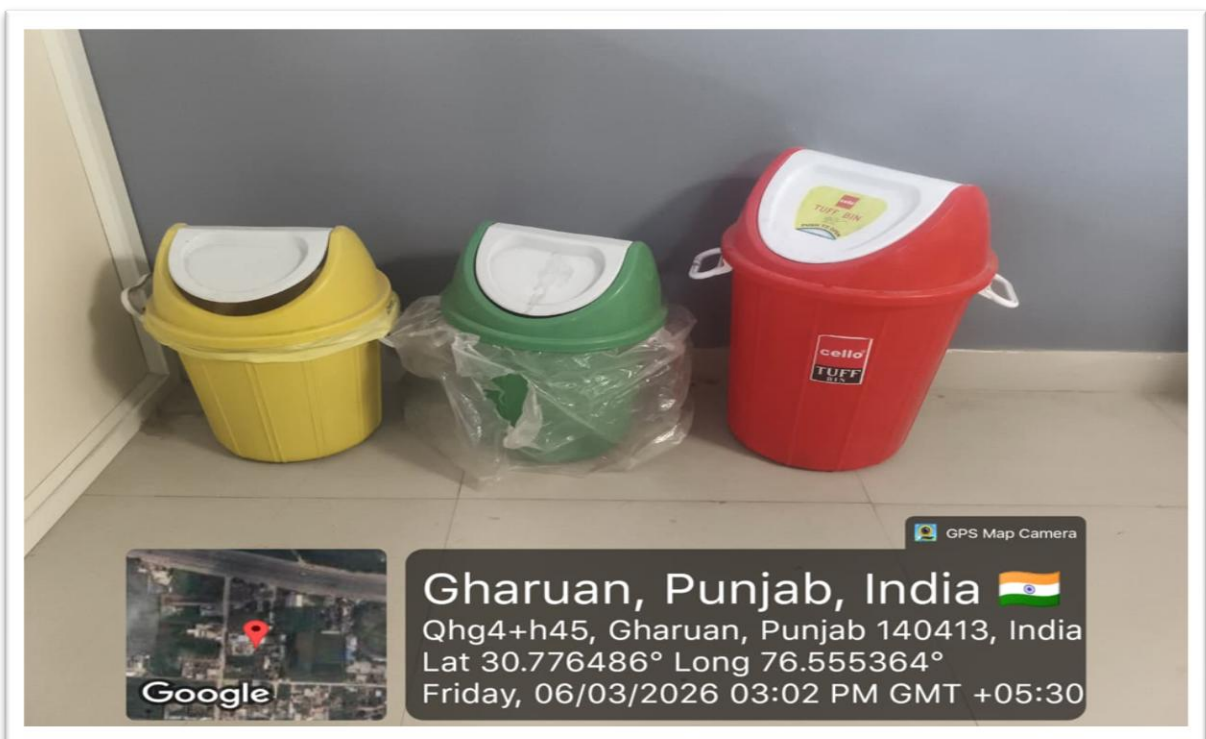
Color-coded waste bins installed on campus to promote proper waste segregation and sustainable waste management practices.

3. Laboratory and Hazardous Waste Management

Pharmacy laboratories generate chemical waste, reagents, solvents, and glassware residues. Proper handling procedures are followed to ensure safety and regulatory compliance.

Key Practices

- Chemical waste registers maintained in laboratories
- Proper labelling and storage of hazardous chemicals
- Disposal through authorized hazardous waste agencies



Segregated waste disposal bins installed in the laboratory to ensure safe and hygienic waste management

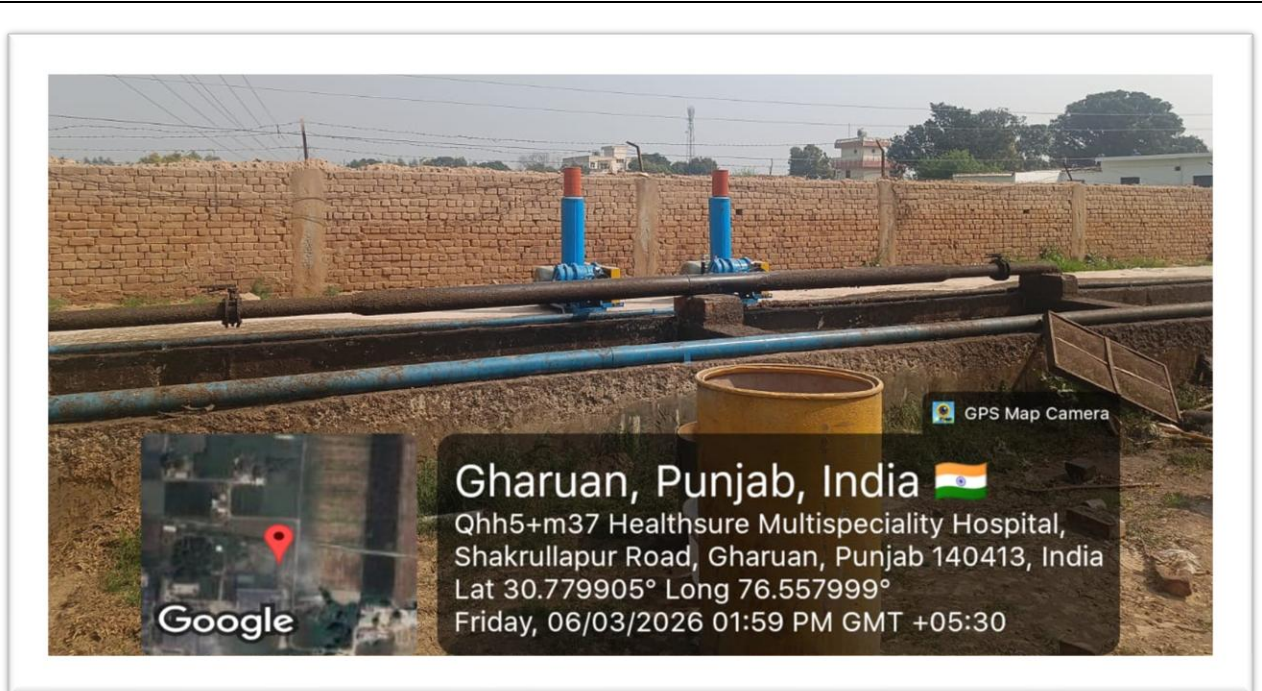
4. Biomedical Waste Management

Biomedical waste generated from microbiology, biotechnology, and laboratory experiments is handled as per biomedical waste management guidelines.

Procedures

- Segregation using color-coded biomedical waste bins
- Temporary storage in designated secure areas
- Disposal through authorized biomedical waste disposal agencies

- Maintenance of biomedical waste logbooks and disposal certificates



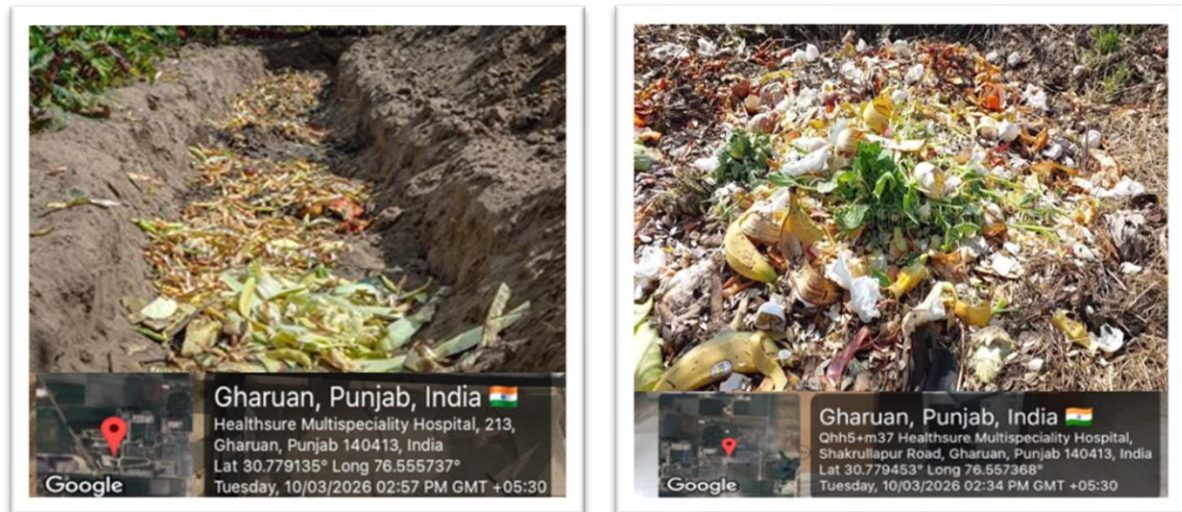
Sewage Treatment Plant (STP) Pumping Unit: Pumps and pipelines installed for the transfer and treatment of wastewater generated within the campus before safe disposal or reuse for landscaping purposes.

5. Biodegradable Waste Composting

Organic waste generated from the canteen, gardens, and landscaping activities is processed through composting systems.

Composting Activities

- Wet waste collection in green bins
- Processing through vermicomposting pits or compost units
- Production of organic compost
- Use of compost in campus gardens and plantations



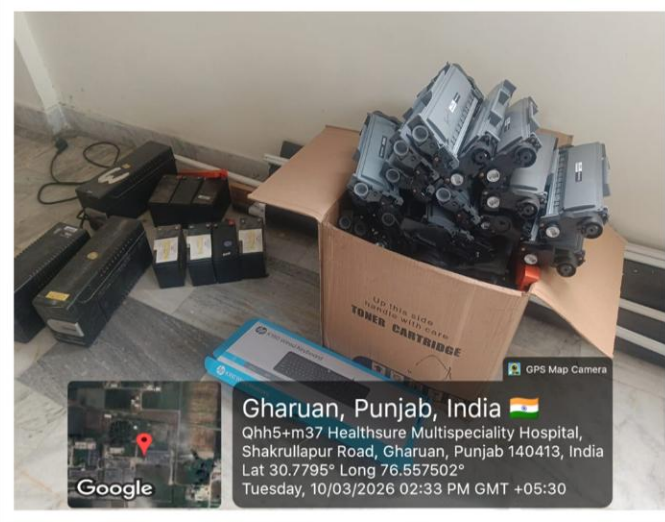
Organic waste such as fruit peels, vegetable scraps, and plant leaves is collected and decomposed naturally to produce nutrient-rich compost, promoting sustainable waste management and soil enrichment.

6. E-Waste Management

Electronic waste generated from computers, printers, and laboratory equipment is managed through a systematic inventory and disposal mechanism.

Key Measures

- Maintenance of obsolete electronic equipment inventory
- Safe storage in designated e-waste collection area
- Disposal through SPCB-authorized e-waste recyclers
- Maintenance of disposal certificates for audits



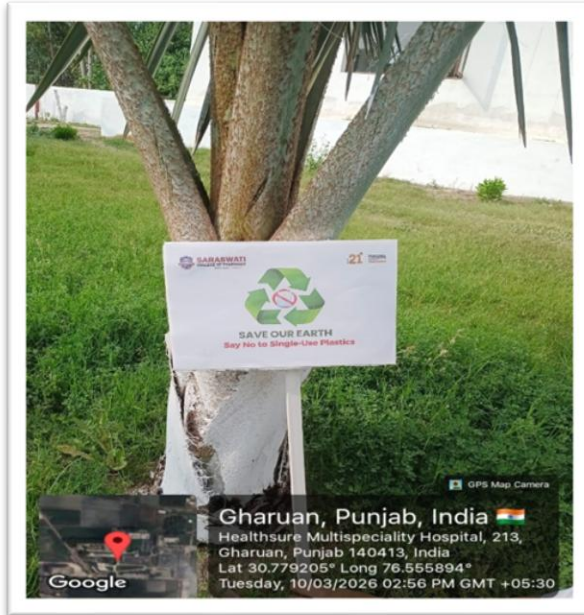
Proper collection and storage of electronic waste to ensure safe and sustainable disposal practices

7. Single-Use Plastic Ban Initiative

The institution promotes a plastic-free campus policy.

Major Measures

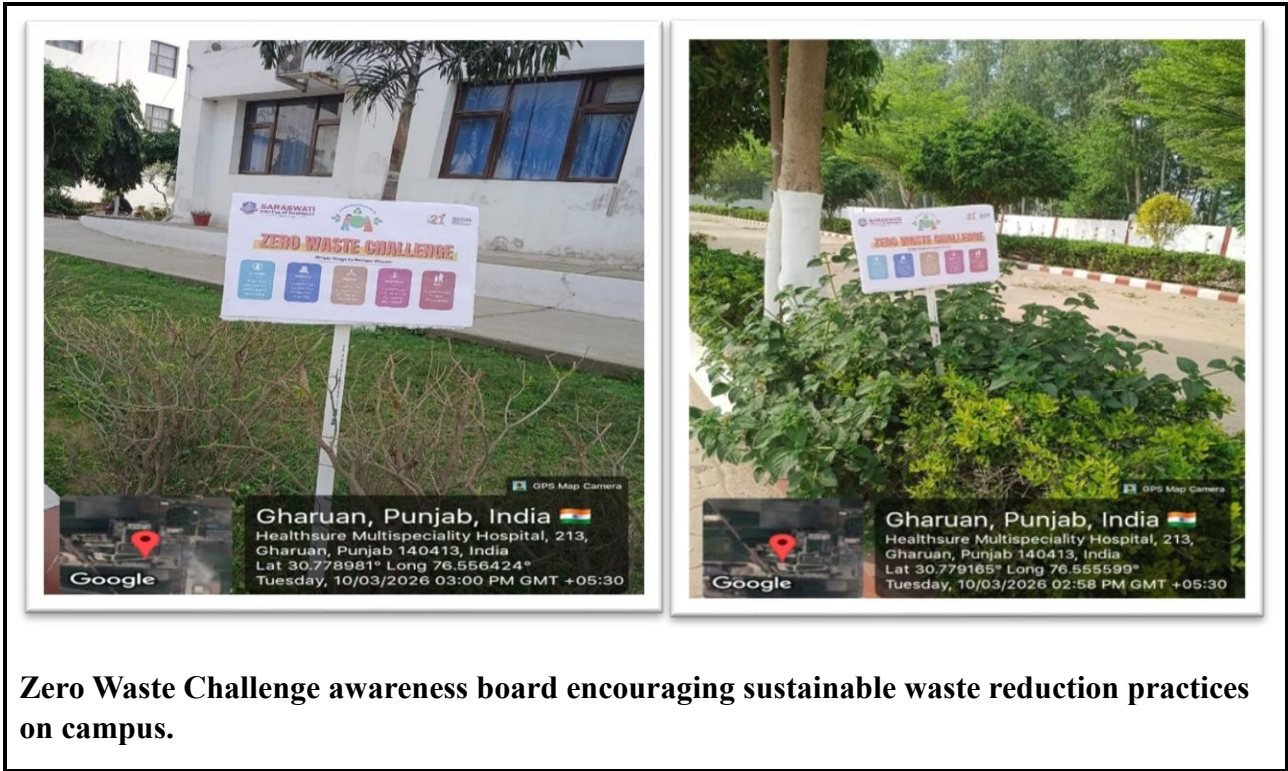
- Ban on plastic carry bags, plastic cutlery, plastic cups, and straws
- Awareness signage displayed across campus
- Encouragement of digital documentation to reduce plastic and paper use



Awareness signage installed on campus promoting the ban on single-use plastics and encouraging eco-friendly practices

8. Zero Waste Challenge Initiative

As part of its commitment to environmental sustainability, Saraswati College of Pharmacy has introduced a “Zero Waste Challenge” initiative to encourage students, faculty, and staff to actively participate in reducing waste generation on campus.



9. Awareness and Training Programs

The college regularly conducts awareness and training programs for students and staff.



