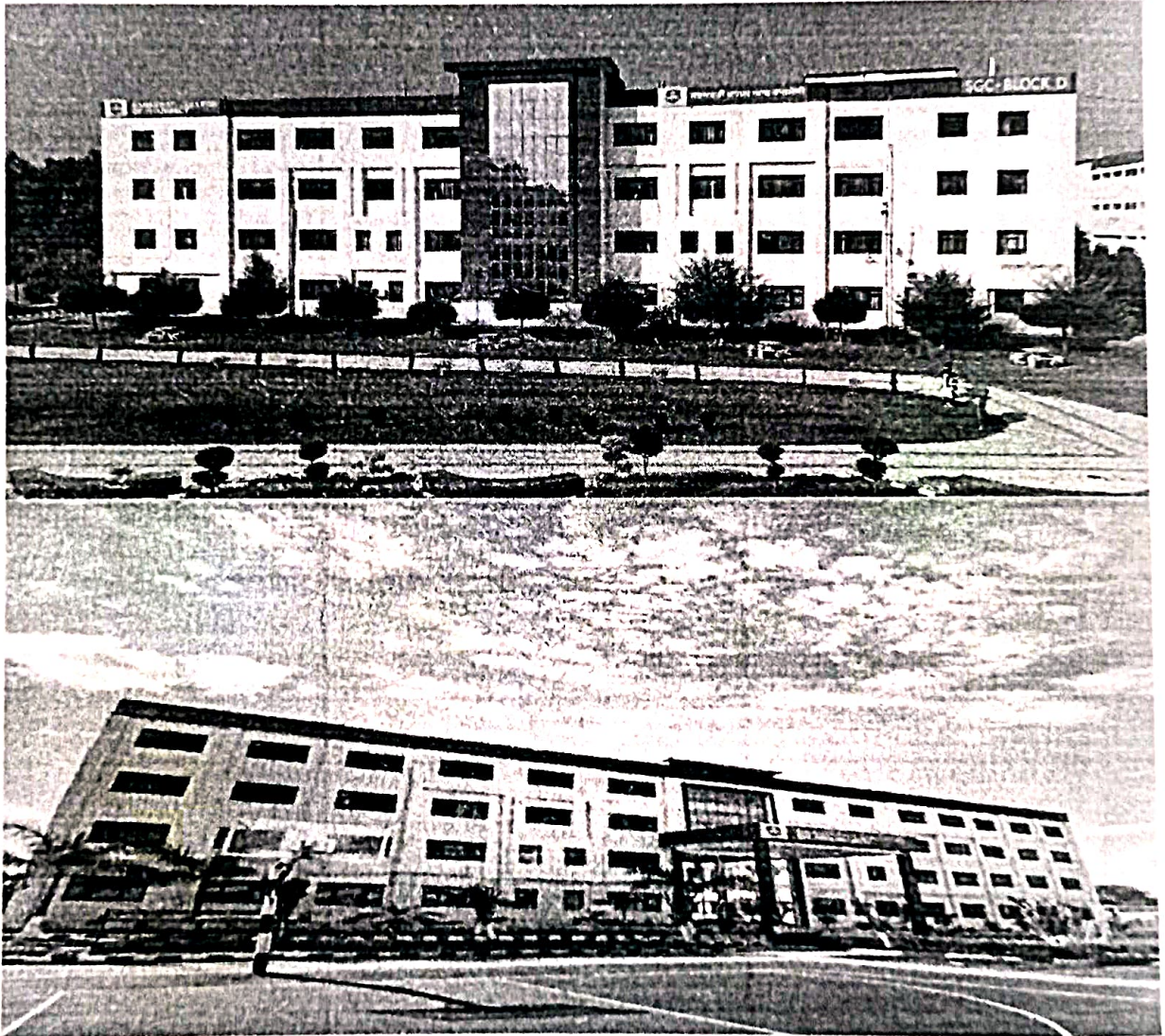




SARASWATI COLLEGE OF PHARMACY

Mohali, Punjab

Sustainable Communities and Partnership Policy



NH 05, Chandigarh - Ludhiana Road, Gharuan, Mohali - 140413, Punjab, India



SARASWATI² COLLEGE OF PHARMACY

———— Mohali, Punjab ————

Sustainable Communities and Partnership Policy

INDEX

1. Introduction
2. Objectives of the Policy
3. Vision
4. Mission
5. Scope of the Policy
6. Environmental Monitoring and Carbon Footprint Disclosure
7. Institutional Actions to Reduce Carbon Footprint
8. Collaboration with Communities and Organizations (MoUs)
9. Student and Staff Participation in Real-World Sustainability Actions
10. Knowledge Sharing and Sustainability Outreach
11. Funding and Institutional Support for Sustainability Initiatives
12. Sustainable Communities and Partnerships Activities (Last 3 Years)
13. Implementation and Monitoring Mechanism
14. Expected Outcomes
15. Policy Review and Revision



SARASWATI³ COLLEGE OF PHARMACY

— Mohali, Punjab —

1. Introduction

Saraswati College of Pharmacy, Gharuan, Punjab, under the umbrella of Saraswati Group of Colleges, is committed to promoting sustainable development through community engagement, environmental responsibility, and collaborative partnerships. The institution recognizes its role in building sustainable communities by integrating social responsibility, environmental awareness, and collaborative initiatives into academic and outreach activities.

Through sustainable campus management, community outreach, institutional collaborations, and research initiatives, the college strives to build environmentally responsible communities while encouraging students and staff to actively participate in sustainability practices. This policy aligns with the **United Nations Sustainable Development Goals (SDG 11 and SDG 17)** to promote inclusive, safe, resilient communities and strengthen partnerships with government, healthcare institutions, industries, and civil society organizations.

2. Objectives

- 2.1 Promote environmentally sustainable practices within the campus and surrounding communities.
- 2.2 Encourage collaborative partnerships with healthcare institutions, industries, NGOs, and government bodies.
- 2.3 Engage students and faculty in real-world sustainability actions beyond classroom learning.
- 2.4 Support innovation, research, and knowledge sharing related to environmental sustainability.
- 2.5 Contribute to community development and sustainable resource management.



SARASWATI⁴ COLLEGE OF PHARMACY

Mohali, Punjab

3. Vision

To foster a sustainable, responsible, and community-oriented academic environment by promoting environmental stewardship, social responsibility, and collaborative partnerships that contribute to the well-being and sustainable development of society.

4. Mission

- ✓ Promote sustainable practices and environmental responsibility on campus.
- ✓ Build partnerships with healthcare institutions, industries, NGOs, and government bodies for community development.
- ✓ Engage students and faculty in sustainability initiatives and outreach activities.
- ✓ Encourage research and innovation related to environmental sustainability and public health.
- ✓ Support community well-being through responsible resource management and awareness programs.

5. Environmental Monitoring and Carbon Footprint Disclosure

The institution monitors environmental indicators to assess and minimize its ecological impact.

5.1 Institutional Practices

- ✓ Periodic **green audits and environmental assessments** to evaluate campus sustainability performance.
- ✓ Monitoring of **energy consumption, water usage, waste management, and green campus indicators.**
- ✓ Documentation of sustainability practices through institutional reports and quality assurance documentation.

5.2 Public Disclosure

Environmental metrics and sustainability initiatives are documented and shared through:

- ✓ Institutional reports and sustainability documentation
- ✓ Accreditation reports and environmental audit records
- ✓ Institutional website and public awareness programs



⁵SARASWATI COLLEGE OF PHARMACY

Mohali, Punjab

These mechanisms enable transparency and promote responsible environmental governance.

6. Institutional Actions to Reduce Carbon Footprint

The college actively implements measures to reduce environmental impact and carbon emissions.

Key Initiatives

- ✓ Promotion of **energy conservation practices** across campus facilities.
- ✓ Adoption of **green landscaping and tree plantation drives**.
- ✓ Encouragement of **eco-friendly transportation practices** such as cycling and reduced vehicle entry.
- ✓ Implementation of **waste segregation, recycling, and plastic-free campus initiatives**.
- ✓ Water conservation practices including **rainwater harvesting and efficient water management**.
- ✓ Awareness campaigns promoting sustainable lifestyles among students and staff.

7. Collaboration with Communities and Organizations (MoUs)

The institution collaborates with various stakeholders to promote sustainability and community development.

Partnerships Include

- ✓ Healthcare institutions and hospitals for **community health and environmental awareness programs**.
- ✓ Pharmaceutical industries for **sustainable pharmaceutical practices and research collaboration**.
- ✓ Non-governmental organizations for **environmental awareness and community development programs**.
- ✓ Local communities and municipal bodies for **cleanliness drives, waste management awareness, and environmental campaigns**.



SARASWATI⁶ COLLEGE OF PHARMACY

Mohali, Punjab

MoUs

- ✓ Memorandums of Understanding (MoUs) support:
- ✓ Training and research collaboration
- ✓ Community outreach and environmental initiatives
- ✓ Skill development and sustainability projects
- ✓ These partnerships strengthen the institution's contribution to sustainable community development.

8. Student and Staff Participation in Real-World Sustainability Actions

The institution encourages active involvement of students and staff in sustainability-related activities beyond classroom learning.

Examples of Activities

- ✓ Community health awareness programs
- ✓ Cleanliness drives and waste management campaigns
- ✓ Environmental awareness rallies and sustainability workshops
- ✓ Water conservation and sanitation awareness initiatives
- ✓ Participation in community development projects
- ✓ Sustainable healthcare awareness programs in rural areas
- ✓ These initiatives provide students with practical exposure to sustainability challenges and solutions.

9. Knowledge Sharing and Sustainability Outreach

The institution actively shares its sustainability practices and experiences with other institutions and the community.

Platforms for Knowledge Sharing

- ✓ Academic seminars and workshops on environmental sustainability
- ✓ Faculty Development Programs (FDPs) related to sustainability and environmental health
- ✓ Community outreach and awareness programs
- ✓ Institutional visits and collaborative programs with other educational institutions



SARASWATI⁷ COLLEGE OF PHARMACY

Mohali, Punjab

- ✓ Sustainability-related clubs and student organizations
- ✓ Through these initiatives, the college promotes knowledge exchange and collaborative learning.

10. Funding and Institutional Support for Sustainability Initiatives

The institution encourages innovation and research related to sustainability by supporting student and faculty initiatives.

Support Mechanisms

- ✓ Institutional support for sustainability-related **research projects and innovations**
- ✓ Financial support for **conferences, workshops, and seminars related to environmental sustainability**.
- ✓ Encouragement for participation in **inter-institutional sustainability collaborations**
- ✓ Support for student-led sustainability clubs and environmental initiative
- ✓ These initiatives foster a culture of environmental responsibility and innovation.

11. Sustainable Communities and Partnerships – Activities (Last 3 Years)

Over the past three years, the institution has organized and participated in various sustainability initiatives, including:

- ✓ Environmental awareness campaigns and plantation drives
- ✓ Community health and sanitation programs
- ✓ Waste management and plastic-free campus initiatives
- ✓ Workshops and seminars on environmental sustainability
- ✓ Collaborative programs with healthcare institutions and community organizations
- ✓ Student participation in environmental outreach activities
- ✓ These activities contribute to the institution's commitment to building sustainable communities and strengthening partnerships.

12. Implementation and Monitoring

The implementation of this policy is overseen by:

- ✓ Internal Quality Assurance Cell



SARASWATI⁸ COLLEGE OF PHARMACY

Mohali, Punjab

- ✓ Environmental or Green Campus Committee
- ✓ NSS / community outreach units
- ✓ Institutional leadership and administrative departments
- ✓ Regular monitoring and review ensure that sustainability goals and community partnerships continue to grow and improve.

13. Expected Outcomes

Implementation of this policy will:

- ✓ Promote sustainable environmental practices within the institution.
- ✓ Strengthen partnerships with community and industry stakeholders.
- ✓ Encourage active student participation in sustainability initiatives.
- ✓ Enhance the institution's contribution to community development and environmental protection.
- ✓ Support the achievement of **SDG 11 and SDG 17**.

Principal

Saraswati College of Pharmacy

Principal

SARASWATI COLLEGE OF PHARMACY
GHARUAN, MOHALI - 140413